

# TESH, Inc.

## Community Links

### Charlene Jensen retires after 13 years at TESH — New program manager is Heather Bartell

Friends, co-workers, TESH clients and their family members celebrated Charlene Jensen's service to TESH as manager of Family Support Services at a reception in her honor.

Charlene began work at TESH as Residential Administrator in 1993 and grew the program to where it is today. She looks forward to spending more time with family in the St. Louis area.



*Heather Bartell and Charlene Jensen*

Heather Bartell is now manager of the Family Support Services program. She has been with TESH since

2002, most recently as Program Coordinator for the Family Support Services program.

Heather is a graduate of the University of Idaho with degrees in Psychology and Sociology. She is a Certified Development Specialist, with experience as Targeted Service Coordinator (TSC), Early Service Coordinator (ESC) and Behavior Health Care Plan Developer.

### Windermere Foundation Awards Grant

TESH has received a \$2,000 grant from the Windermere Foundation for the 2006 Camp Independence summer program.

Camp Independence provides opportunities for children with special needs to interact with peers in a group setting with individualized programs and direction from a life-skills coach. Coordinated activities such as horseback riding, swimming, hiking and boating are offered.

The Windermere Foundation, established in 1989 as a non-

profit organization, is dedicated to providing funds to programs that assist homeless and low-income families, especially women and children. The foundation gathers the major-

ity of funds in a unique way. When a Windermere Associate completes a real estate transaction successfully, a portion of the commission is contributed to the foundation.

### Getting "In Touch" with Nature

*TESH client Annie Hegbloom gets acquainted with an unusually friendly llama during a recent Activity Center animal therapy field trip. The Activity Center at TESH provides outings for participants on a regular basis, as well as community access two to three times a week.*



Volume 1, Issue 2

June 2006

### Board of Directors 2005-2006

Tamie Fields, Chair  
*Verizon*  
Paula Smyly, Vice Chair  
*Mountain West Bank*  
JoAnn Curtis, Secretary  
*Post Falls School District*  
Gene Tanzey, Treasurer  
*Retired CPA*  
Jeff Conroy  
*United Way*  
Karen Cook  
*Buck Knives*  
Dave Daboll  
*Beebe, McKernan & Daboll*  
Jim Hail  
*Hagadone Directories*  
Richard Jurvelin  
*Windermere/CdA Realty*  
Mike Patrick  
*The Coeur d'Alene Press*  
Roberta Paulitz  
*Consumer Advocate*  
Sue Thilo  
*Community Activist*  
Russell Doumas  
*Chief Executive Officer*



Proceeds from the sale of donated vehicles, whole or in parts, is divided equally among four North Idaho organizations—TESH, Inc., Community Action Partnership Food Bank, Hospice of North Idaho, and Unity Church of North Idaho.

**How to donate?  
Call (208) 664-9996**

## Community Links

### • Thrift Store Donations Roll In, Despite the Damp

Hardy donors didn't let the cold and damp deter them from bringing in their gently-used items for the first TESH Spring Clean & Fling event on Saturday, April 8 at the main offices on Industrial Avenue. The main objective of the event was to continue the campaign to inform the surrounding communities that TESH accepts donated items in Coeur d'Alene for sale in the Kellogg Thrift Store.

A dozen TESH staff and several Board Members donated their time, cooking abilities or gently used items that day.

Approximately fifty people brought items by or called in the

week prior or week following to donate their items. Two truck loads were taken to Kellogg.



*(L. to r.) Roberta Paulitz, TESH Board Member and parent; Susan Martin, Administrative Assistant at TESH; and Russ Doumas, TESH CEO; enjoy a break from unloading donations for the thrift store during the first Spring Clean and Fling event at TESH.*

Since the push to increase community awareness regarding the Thrift Store in Kellogg and donations taken in Coeur d'Alene, donations have been on the rise, and daily average sales at the store have also increased.

### DONATIONS WANTED!

Gently used, good condition:

- ✓ Furniture — for Home or Office
- ✓ Household Appliances
- ✓ Clothing, Coats, Boots
- ✓ Other Household Goods



Bring your donations to TESH in Coeur d'Alene or Kellogg; or arrange pick up by calling 208-765-5105, Monday-Friday, 8 am -5 pm.

Saturday pick up or delivery available by appointment.

#### The Second Time Around Thrift Shop

140 Railroad Ave, Kellogg, Idaho 83837  
(208) 783-0783

*This store generates revenue to benefit those with disabilities served by TESH and creates employment opportunities for TESH clients.*

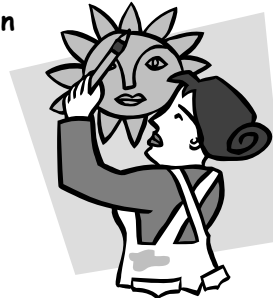
ALL donations to TESH are tax-deductible. Contributions to TESH also qualify for an additional 50% state income tax credit.

### Volunteers Needed!

**TESH, Inc. is looking for volunteers with a talent or gift to share with children or adults with developmental disabilities.**

**Patient, compassionate people interested in any of the following activities are asked to call 208-765-5105 and talk with Terri Johnson.**

- Feature (career or experience) speakers
- Classroom aides in music, art, sewing, gardening
- Help with parties and celebrations
- Assist on field trips



## TESH, Inc.

3803 Industrial Ave. S.  
Coeur d'Alene, ID 83815

*Empowering People to Reach Their Potential*

We are on the Web!  
[www.teshinc.com](http://www.teshinc.com)

Non-Profit  
US Postage Paid  
CDA, ID  
Permit #31